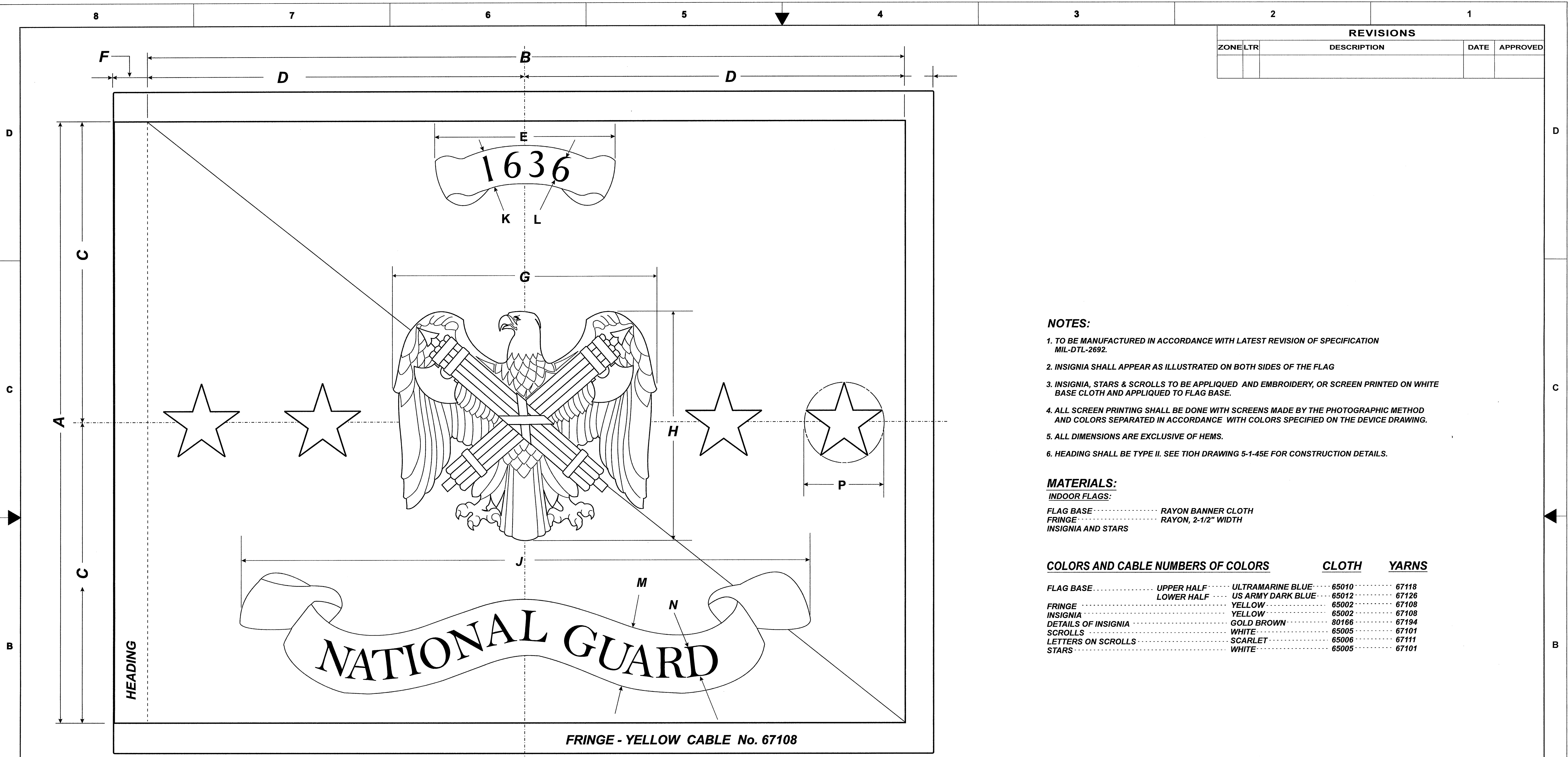


REVISIONS			
ZONE/LTR	DESCRIPTION	DATE	APPROVED



NOTES:

1. TO BE MANUFACTURED IN ACCORDANCE WITH LATEST REVISION OF SPECIFICATION MIL-DTL-2692.
2. INSIGNIA SHALL APPEAR AS ILLUSTRATED ON BOTH SIDES OF THE FLAG
3. INSIGNIA, STARS & SCROLLS TO BE APPLIED AND EMBROIDERY, OR SCREEN PRINTED ON WHITE BASE CLOTH AND APPLIED TO FLAG BASE.
4. ALL SCREEN PRINTING SHALL BE DONE WITH SCREENS MADE BY THE PHOTOGRAPHIC METHOD AND COLORS SEPARATED IN ACCORDANCE WITH COLORS SPECIFIED ON THE DEVICE DRAWING.
5. ALL DIMENSIONS ARE EXCLUSIVE OF HEMS.
6. HEADING SHALL BE TYPE II. SEE TIOH DRAWING 5-1-45E FOR CONSTRUCTION DETAILS.

MATERIALS:

INDOOR FLAGS:
 FLAG BASE RAYON BANNER CLOTH
 FRINGE RAYON, 2-1/2" WIDTH
 INSIGNIA AND STARS

COLORS AND CABLE NUMBERS OF COLORS CLOTH YARNS

FLAG BASE	UPPER HALF	ULTRAMARINE BLUE	65010	67118
	LOWER HALF	US ARMY DARK BLUE	65012	67126
FRINGE		YELLOW	65002	67108
INSIGNIA		YELLOW	65002	67108
DETAILS OF INSIGNIA		GOLD BROWN	80166	67194
SCROLLS		WHITE	65005	67101
LETTERS ON SCROLLS		SCARLET	65006	67111
STARS		WHITE	65005	67101

SCALE: 1/4 ACTUAL SIZE FOR 4'- 4" X 5'-6" FLAG

No. OF LINE	KIND	DIMENSIONS										HEADING			
		A	B	C	D	E	F	G	H	J	K	L	M	N	P
1.	INDOOR FLAG	4' - 4" (1.32 M)	5' - 6" (1.67 M)	2' - 2" (66.04 cm)	2' - 9" (83.82 cm)	14 1/4" (36.2 cm)	3" (7.62 cm)	1' 9" (53.34 CM)	18 1/4" (46.36 cm)	3' 9" (1.14M)	3" (7.62 cm)	6" (15.24 cm)	4 3/4" (12.07 cm)	2 1/2" (6.35 cm)	6 1/2" (16.51cm)
2.	INDOOR FLAG	3' - 0" (91.44 cm)	4' - 0" (1.22 M)	1' - 6" (45.72 cm)	2' - 0" (60.96 cm)	10 1/2" (26.67 cm)	3" (7.62 cm)	1' 4" (40.64 cm)	1' 17/8" (35.24 cm)	2' 8 3/4" (83.19)	2 1/8" (5.40 cm)	1 1/2" (3.81 cm)	3 1/8" (7.94 cm)	1 13/16" (7.94 cm)	6 1/4" (15.88 cm)

SUPERSEDES TIOH DWG No. 5-1-520 DTD 7 FEBRUARY 1975

UNLESS OTHERWISE SPECIFIED DIMENSIONS ARE IN INCHES TOLERANCES ON FRACTIONS DECIMALS ANGLES	THE INSTITUTE OF HERALDRY, DEPARTMENT OF THE ARMY 9325 GUNSTON RD, RM S-113 FORT BELVOIR, VA 22060-5579	
	DISTINGUISHING FLAG	
MATERIAL:	EXAMINED <i>DW</i>	CHIEF, NATIONAL GUARD BUREAU
	CHECKED <i>DM</i>	
	PREPARED <i>DMA</i>	SIZE CODE IDENT. NO
	APPROVED <i>Charles V. Mugno</i> CHARLES V. MUGNO DIRECTOR	D 22571 5-1-520
SCALE FULL		DATE 28 JULY 2008